

# Shepley Magazine

Free to every  
Shepley  
household

Issue 84  
May 2026



St Paul's Church  
Needs your Ideas

Shepley Folk  
Lucy Kilroy

History of Upper  
Dearne Woods

# YOUR PC iFix STATION

Laptop and PC Repairs

Refurbished / Almost New Laptops

1 Choppards Buildings, Holmfirth. HD9 2RW  
Tel 07501 507761

[www.your-pc.info](http://www.your-pc.info)

# Frillies

Lingerie, Nightwear & Swimwear Boutique

4 Bridge Street, Penistone,  
Sheffield, S36 6AJ

Call 01226 496781

Book your bra fitting at:

[frilliesboutique.setmove.com](http://frilliesboutique.setmove.com)

[www.frilliesboutique.co.uk](http://www.frilliesboutique.co.uk)

FREE BRA FITTING SERVICE

## PET & COUNTRY STORE, PENISTONE

FEEDING ANIMALS WELL FOR LESS



KIRKWOOD MILL, SHEFFIELD ROAD  
PENISTONE S36 6HQ

Wild Bird Food • Hardware • Pet Foods • Treats  
Bedding Accessories • Equine • Poultry  
Agricultural • Winter Fuels

T: 01226 762341 • [argofeeds.com](http://argofeeds.com)

Knowledgeable staff offer friendly + impartial advice



Local Delivery Available • [orders@argofeeds.co.uk](mailto:orders@argofeeds.co.uk)

All foot ailments treated

## Emma Robinson PODIATRY

Chiropodist and Podiatrist

Emma Robinson BSc MCPod  
HCPC Registered (CH15232)

Clinic and home visits available

T: 07870 606314

E: [emmarobinsonpodiatry@gmail.com](mailto:emmarobinsonpodiatry@gmail.com)

## RICHARD HALLAS

Your Local Plumber

A quality job at a reasonable price

Full Bathroom Service

Emergency Work

Mobile 07976 825543

22 Park Drive, Shelley

## ROSE & CROWN

Thurstonland

Bar Open:

Sunday to Thursday noon to 10.00pm  
Friday & Saturday noon to 10.30pm

Food served:

Brunch menu: Monday to Saturday 11am to 3pm  
Sunday 9.30 to noon

Main menu: Monday to Saturday noon to 9pm  
Sundays noon to 8pm

Mondays: Kids eat for free (1 adult meal for 1 under 10yrs meal)

Tuesdays & Thursdays: Steak with a free glass of house wine

Wednesdays: 8.30pm Quiz & card games with free supper

Fresh fish Fridays & Sundays Roast

Telephone: 01484 660790



## GEORGIE

School of Theatre Arts

[www.georgieschooloftheatrearts.com](http://www.georgieschooloftheatrearts.com)

Willow Studios, Barncliffe Mills,

Near Bank, Shelley - Tel. 01484 606994



BJA | Physiotherapy

## BJA Physiotherapy

Chartered Physiotherapist

Everyday aches | Joint pain | Sports injuries

Book your appointment

01484 605 321

07879190521 (WhatsApp)

[info@bjaphysio.com](mailto:info@bjaphysio.com)

[www.bjaphysio.com](http://www.bjaphysio.com)

The Mill  
150 Penistone Road  
Shelley  
Huddersfield  
HD8 8JQ

## Welcome to May's edition

With winter now firmly behind us, we can once again appreciate how lucky we are to live in such an idyllic location to welcome in the wonderful month of May. A time of re-birth, with nature's colours all around and the beautiful joyous sounds of wildlife once again heard after the perils of the last few months. Our cover photo this month illustrates the pleasure to be had by simply immersing oneself in our natural surroundings. Bluebells are wonderful at this time of year, but last for a relatively short time. Our cover photo was taken in Stones Wood between Shepley and Stocksmoor in early May last year, but a week or so later it had all but vanished for another year. So, if you would like to enjoy it, be sure to head out without delay. Another nearby habitat that is rich in beautiful flora and fauna, can be found in Upper Dearne Woods. This area, maintained by wonderful local volunteers, really is a feast for the senses and can be found near Upper Cumberworth. Parking can be a problem here so best to get the walking boots out and stretch your legs or perhaps be dropped off by an accommodating driver. Either way, it is a stunning place to take in the sights, sounds and smells, particularly at this time of year, whilst appreciating the hard work of the volunteers. More information on this area can be found in the article by Geoff Higgs, Chair of the Conservation Group, on page 28.

Whilst on the subject of our natural terrain, it is a concern to many that green belt land in our area seems to be rapidly disappearing to development. Of course, new housing is needed to accommodate an increasing population and especially to provide starter homes for young people and retirement homes for the elderly. It is however the erosion of natural green habitat that is a particular concern for many people. Whatever your feelings on this contentious issue be sure to choose candidates in the local elections who support your points of view on all matters. In the local council elections of 2024, almost sixty-three per cent of eligible residents in Kirkburton Ward sacrificed their right to vote. Whatever your opinions on local issues, please make sure your voice is heard by exercising your democratic right on Thursday 7th May. Photographic identification is required if you intend to vote at a polling station. Full details of what is acceptable can be found online.

Here is a link to the Electoral Commission website:

<https://www.electoralcommission.org.uk/voting-and-elections/voter-id/accepted-forms-photo-id>

## Shepley Magazine Team

---

### Magazine Contact details:

**Email contributions** by the 12th of the month to: [contributions.shepleysmag@hotmail.com](mailto:contributions.shepleysmag@hotmail.com)

**Write** to us and place your letter in the Shepley Magazine Box in the library.

**All other enquiries including advertising to:** [shepleysmag@gmail.com](mailto:shepleysmag@gmail.com)

If you would like a **PDF digital copy of the magazine email:** [shepleysmag@gmail.com](mailto:shepleysmag@gmail.com)

**Magazine donations to:** Lloyd's Bank - Sort Code 30-98-97 Account - 64780368 or write a cheque out to Shepley's Magazine and place it in the Shepley Magazine Box in the library, thank you.

© Copyright Shepley's Magazine

Cover illustration *Pete Casey*

### Featured in this issue:

Shepley Fields Forever	p6
Friends of Shepley Station	p14
Shepley Folk	p16
Health Centre News	p30
Cricket Club News	p34

## Dates for your diary! 6th June & 3rd July



**Good morning, afternoon or evening!** Grab a brew and read what FOSFS has been up to since my last update...

We've been very busy planning our **2026 DIY SOS Day**, taking place on **Saturday 6th June**, starting at **9:00am**. It promises to be a really productive day, with painting, planting and plenty of tidying to be done around school.

As always, the success of this event relies on the support of our wonderful community, so we would love to see as many of you there as possible. Many hands really do make light work!

We'd also love a kind volunteer to **bake a cake** to keep our hardworking helpers going. The BBQ will be lit as a thank you to everyone who gives their time and energy to support the school. This event has always been brilliantly supported, and we hope this year will be no different.

Our **Summer Fair plans** are also well underway. The fair will take place on **Friday 3rd July at Shepley Cricket Club** and promises all the usual fun for the whole community. Fingers crossed for sunshine! We hope you'll add both dates to your diary and join us for these two big events.

Thank you, as always, for reading our update. If you'd like to get involved or offer your support, please pop into the school office, give them a call on **01484 603230**, or email [office@shepleyfirst.org](mailto:office@shepleyfirst.org).

With thanks, **Gillian & Team FOSFS**

---

## Cliffe House Woodland Volunteers Tree planting 8th April 2026



Members of the WI and Cliffe House Woodland Volunteers are shown at Cliffe House at a tree planting. The tree was donated by Shepley Women's Institute.



WI President Shelagh Smith, along with committee member Vicky Wilmot planted the tree, an Amalanchier Lamarkii.

This tree has a lovely star shaped blossom in early spring changing to green berries in June (hence June berry common name), giving way to red. With orangey/red leaves in autumn, this gives maximum interest throughout the year

## St Paul's Church

# We need your ideas: Please give us a bell

When St. Paul's Church was built in 1848 it included a bell cote containing two bells. The bells can only ring Ding Dong but have announced services, weddings and funerals for many years. They were originally rung manually from the West Gallery but in 2004 they were taken down, refurbished and re-hung.



This was the first step in re-structuring the back of church which included the removal of the gallery which had become dangerous. This meant that Ding and Dong could no longer be rung manually. My fellow warden at the time, Paul Arthur, and myself investigated the possibility of attaching the bells to the clock so that they would strike for the first time.



The clock was installed by the village to commemorate the Coronation of Queen Elizabeth II. A plaque to this effect can be seen in the porch. The Parochial Church Council (PCC) agreed, and the clock and bells were attached to the atomic clock in Greenwich. This meant that the clock would not only automatically reset itself when the clocks go forward and back but also



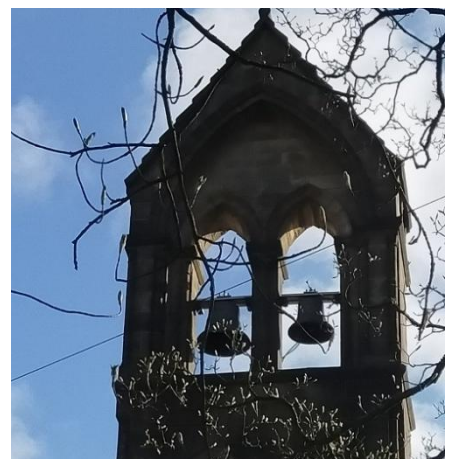
chime the quarters and hour. We were also able to set the bells to ring for regular services, and at the press of a button for other events such as weddings. Ding and Dong have become a regular reminder of the time all over Shepley.

A few months ago, it was noticed that Ding appeared to be on 'strike'. The quarters and hours were only marked by Dong giving one two, and three Dongs on the quarters followed by four on the hour then after a short break the appropriate number for the hour. Therefore, at four o'clock we get four Dongs then another four. Having spoken to Smiths of Derby who service the clock, it appears that Ding's clapper could be the problem.



A bigger problem is that we can't have anything checked as it would need scaffolding to reach the bells and the cost would be beyond what the Church could afford, especially as the added cost of repairs is unknown.

If anyone has any ideas about how we can once again have Ding and Dong working together as they have done for 178 years, please let us know. Thank you.



Churchwardens

*Doreen Halliwell* Tel.603798 or 07780670961

*Audrey Williams* Tel.07812826399

## Shepley Fields Forever

# Worrying possibilities!!!!

Whilst out delivering the latest Shepley Fields Forever update leaflet, we were engaged in conversation with other residents from the local area. They talked about potential developments and planning applications in their areas. This makes six applications within less than a mile radius of the Sovereign: Birdsedge, Shepley, Stocksmoor, Cumberworth and Denby Dale. These have been made possible by the Government's commitment to building millions of new homes over a short period. To achieve that it has made a number of policy changes including to the use of green belt land; it has also introduced a category of land known as grey belt.



In the case of green belt, a more flexible approach has been adopted which developers are now looking to exploit. One of the new criteria is where there is a "demonstrable unmet need" for the type of development proposed. That phrase in turn feeds into whether the local authority is meeting government targets for new housing. Unfortunately, Kirklees is not meeting those targets which enables developers to argue in favour of building on green belt.

Meanwhile the definition of grey belt land is very wide. It is any land that does not contribute to preventing the sprawl of towns and cities (but not villages) or towns merging into each other (but again not villages) or preserving historic towns. It has been reported that in Leeds, the planning department has estimated that this definition could turn 90% of that city's green belt into grey belt. That is a troubling statistic.

While there is undoubtedly a need for more affordable housing, readers may also think that there is a need to remain vigilant to ensure that our local area is not adversely affected by a short term, piecemeal approach to house building that has an adverse impact on local services that are already overstretched.

Kirklees Council's Local Plan must allocate land for residential development. The Council are developing a new plan which is being drawn up and will be the subject of a public consultation next year. Landowners and developers will be pushing to include more sites similar to the ones under consideration.

We must all remain vigilant and oppose speculative development until we have a chance to influence the Local Plan through the consultation process.

Looking at the Kirklees website there are now 525 comments regarding the proposed Eastfield development.

You can still have a say about Shepley and its fields. If you have not done so yet – make sure your voice is heard **by sending an email to: [dc.admin@kirklees.gov.uk](mailto:dc.admin@kirklees.gov.uk)**. Please remember to include your **name and address** and the **planning application reference number - Ref: 2025/92776**.

*Shepley Fields Forever*

Shepley Fields Forever would like to apologise for claiming, on their recent leaflet, that the First School was oversubscribed.

This is not the case currently. We should have said, if the proposed new development goes ahead, we believe the schools will be oversubscribed.



# Celebrating 40 Years of Travel Experience in Kirkburton

Hear from our Advertisers

This May, we at Travel Experience are incredibly proud to celebrate 40 years in business. As an independent travel agency based in Kirkburton, reaching this milestone is a real achievement and one we are delighted to share with our customers and community. For four decades, we have loved turning holiday dreams into unforgettable memories.

Travel Experience was founded in 1986 and over the years we have seen the travel industry change beyond recognition. From paper tickets and shelves full of brochures to today's digital world, we have adapted at every stage. What has never changed is our commitment to putting our customers first and offering personal, knowledgeable advice.



One of the things we are proud of is our exceptional team. Our Managing Director, Julie, has been with the business from the beginning and has guided Travel Experience through four decades of change. Rebecca will celebrate 34 years with us this year, while Sharon has been part of the team for 33 years, with just a short break to look after her young family. Ruth, our manager, has been with Travel Experience for 19 years and plays a key role in the day-to-day running of the business. Amanda and Cindy have been with us for four years, bringing fresh ideas and enthusiasm, while still sharing our focus on excellent customer service. Alison, who joined us over a year ago, completes the team and brings a wealth of travel industry experience further strengthening what

we can offer. Between us, we have decades of travel knowledge, and many of our loyal customers have been booking their holidays with us for generations and value being able to speak to someone they trust, who understands their preferences and can offer reassurance, especially when travel doesn't always go to plan.

The industry has faced challenging times over the years. However, thanks to the dedication of our team and the continued customer support, we have come through and remain a thriving independent business. As we mark our 40th anniversary, we look to the future with excitement. While travel trends and technology will continue to evolve, our values remain unchanged. For us, Travel Experience has always been about people, relationships and creating holidays that truly matter.



Travel Experience is more than just a travel agency; it is a cornerstone of the Kirkburton community, built on trust, experience, and genuine care. This anniversary celebrates not only our 40 years in business, but the journeys shared, the memories created and the many adventures still to come.

Join us in celebrating unforgettable journeys. Be part of our milestone anniversary and let us make your next adventure one to remember. Please see our advert on page 20 and call or email if you'd like to know more.

Travel Experience  
115 North Road  
Kirkburton  
HD8 0RL

01484 602225  
sales@experiencetravel.net  
experiencetravel.net



Travel Experience  
Bringing you the World

## May meeting – the etiquette of afternoon tea



Our March members' meeting saw us leaping (un)gracefully around the room silently mouthing, 'Single, single, double!' as we attempted to keep up with the Zumba routines led by the wonderfully vibrant and extremely patient Gina Wimpenny. The session provided a really good workout, and I wonder how many other members, like me, have since been tempted to start dancing in the supermarket aisles upon hearing the opening bars of Miley Cyrus's 'Flowers'!



Following on from our environmental display at Shepley Library in support of the Climate Coalition's 'Show the Love' campaign, we have recently funded

the purchase of an Amelanchier tree for the gardens of Cliffe House. As well as looking beautiful, trees play an important role in removing harmful pollution from the air, whilst supplying clean oxygen.

The clubs have been busy over the last few weeks. Our walking groups enjoyed sunshine recently, with the Striders tackling a route around Ramsden Reservoir, fortified by a coffee stop at The Fleece, Holme. Meanwhile, the Strollers took in the fresh air at Pugneys Country Park, accompanied by Neela the guide dog, followed by lunch at Emley Farm Shop café.



The Gardening Group weren't so lucky with the weather so held their most recent meeting indoors, swapping seeds, sharing gardening experiences and advice, all whilst sampling delicious home-made biscuits! Also indoors, our Crafts and Crumbs session was well supported as usual, with members experimenting with leather marbling techniques, in addition to making cards and gift boxes.

At our next members' meeting, at 7:30pm on Wednesday, 20th May, we will be educated in the etiquette of afternoon tea by the self styled Victorian 'Baroness Bolsover', so dig out your fine China teacups and come and join us!

If you'd like to find out more about what do we do, please contact: Debra on 07773169535 or email Rosemary at: [rjandgeoff@tiscali.co.uk](mailto:rjandgeoff@tiscali.co.uk), or have a look at our Instagram page [@the\\_shepley\\_wi](https://www.instagram.com/the_shepley_wi) or just pop along to one of our meetings. You can attend up to three meetings each year as a visitor, paying £5 per meeting (which includes a cuppa, cake and a raffle ticket). Hope to see you there!

# Shepley Naturalists' Society

## Summer walks 2025 & signs of spring 2026



### Our summer walks 2025

After a summer season of fabulous, varied walks we met to review the great selection of photos which had been taken by Rodger and Sue.

The meeting was very well attended, and we were treated to an amazing range of wildlife, wildflowers, birds and trees, reminding us of how fortunate we are to have access to our wonderful countryside.

We ended the evening with tea, coffee and cake, and the chance to chat about all we had done, seen and enjoyed over the previous year. We are now looking forward to another year filled with walks and especially walks with post-walk lunches of course.

Before the evening ended Sue handed out next season's programme, the first event of which was a visit to the grounds of Cliffe House.

Thank you to all who contribute in any way, whether it be by planning and leading walks, taking photos for these reports, or generally supporting this long-established Society. *Chris Dixon*



### Signs of spring at Cliffe House

The first of these season's walks was a stroll round the grounds of Cliffe House, looking for signs of spring, on a typical spring day - chilly, but sunny.

We began by visiting the Community Orchard, where fruit trees have been planted in memory of loved ones. This piece of land (known locally as the sledging field) could have been used for housing, but by creating the orchard, it is now safe from the planners. The area around the trees has been left to grow wild, with paths mown to reach the trees. Since being left, nature has begun to reclaim the area - numerous wildflowers have appeared amongst the grasses and they support a variety of invertebrates, which provide food for birds and small mammals, themselves being food for larger predators.

In the woodland margins we noticed wild garlic (ransoms) and a few bluebells. There were also primroses, cowslips and violets, with milkmaids and marsh marigolds around the ponds. Large examples of Alexanders were growing under the hedge in the walled garden.

Birds seen or heard included blackbirds, chaffinches, chiffchaffs, blue tits, great tits, song thrush, blackcaps, wren and mallard on the pond. Squirrels were seen scampering around, enjoying the spring sunshine. A delightful start to our walks season.



*Sue Whitehouse*

Contact: Sue Whitehouse 605614 or David Fisher 682903 or website: [shepley-naturalists.weebly.com](http://shepley-naturalists.weebly.com)



# Shepley Bird and Wildlife Group

## The Willow Tit and Marsh Tit – Steve Rutherford

Steve, as chair of the British Naturalists' Association, has a wonderful knowledge of many things but he began this evening by saying he knew nothing at all – then sat back down. This set the tone for an amusing, entertaining and (in places!) challenging evening.

The title was originally 'The Willow Tit' but as Steve pointed out you can't really discuss the one without the other as they are so very alike. Sadly, both birds are in decline in this country, the willow tit more so than the marsh, but both are on the Red List of threatened species.

The challenge came in trying to identify which one was in the photographs after Steve had taken us through their features. These are quite subtle, such as the shape of the tail, and (sometimes!) the colour



Willow Tit © Di Farrar

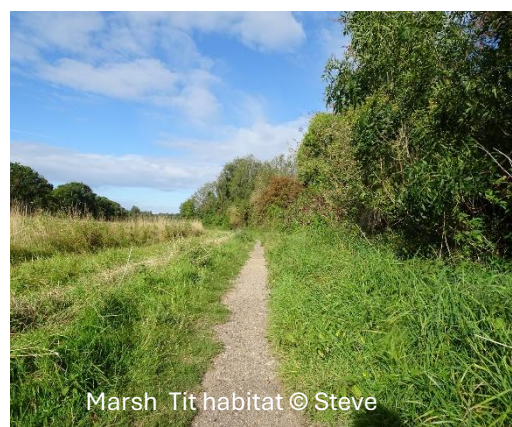


Marsh Tit  
© Steve Rutherford

of wing bars. Even the feature of a white spot on the marsh tit's upper mandible as a good way to tell the difference is small and easily missed. Calls are different too – willows are 'tzeee tzeee' and marsh tits sound like a little sneeze 'pitchou'.

They live in different habitats too – willow tits live in wet woodland, which is now a very rare habitat. Marsh tits tend to live in dry broadleaf woodland. Both visit gardens and other bird feeders. Both hide seeds for later in the autumn, but grey squirrels unfortunately can

watch for their hiding places and steal their food. Blue and great tits are bullies at bird tables and often scare willow and



Marsh Tit habitat © Steve

marsh tits away. These factors are sadly helping their decline.



Rotten stump to encourage Willow Tit nesting  
© Steve Rutherford

Steve is involved with a project at a Suffolk Wildlife Trust project at Knettishall Heath. Here, willow tits have been seen, and the land management project is trying to make more a suitable habitat for them. Locally, they have been seen at Potteric Carr.

After a very enjoyable talk, Steve was thanked with a very enthusiastic round of applause. *Cathy Evans*

Our Indoor Meetings have finished for the summer and will recommence in September, see further details in the August edition of the magazine.

Field visits are open to everyone and are free of charge. We will be visiting RSPB Fairburn Ings, YWT Brockadale and NT Longshaw Estate in May and YWT Wheldrake Ings and Broadstone Common & Reservoir in June. If you would like to join us, please use the contact details below.

Contacts details: email: [shepleybirders@yahoo.com](mailto:shepleybirders@yahoo.com) Tel: Chris Marks 01484 608652

# Have you ever been overwhelmed?



You're not alone. Fifty days after the first Easter, Jesus's disciples were overwhelmed by all that had happened. Afraid and unsure what to do next, they were hiding in a locked room, when suddenly they were each filled with the Holy Spirit!

We know they weren't just making it all up because they were utterly transformed! They went from fearful and uncertain to boldly sharing the Good News with authority, building the foundations for the Christian Church of 2.6 billion people today. That's what we celebrate on Pentecost Sunday. Why not come to the service, on May 24th, and hear more about it?

The Holy Spirit is still very active in the hearts of people today; guiding, strengthening and empowering them to do great things. God also cares about individuals who are overwhelmed, as this promise in Philippians 4.7 tells us, *And the peace of God, which transcends all understanding, will guard your hearts and your minds in Christ Jesus.* 'The peace that transcends understanding' means being able to feel unexpectedly peaceful even though it doesn't make sense or seem possible in the circumstances. So next time you feel overwhelmed, talk to God about it. He loves you even if you don't believe in Him.

And if you're up for a bit of yummy fun, why not join us on May 3rd for a lighthearted service, full of joyful music, followed by an ice cream cornet for everyone!



May 3rd - 10:45am Rev Sue Pegg is leading our cafe-style, **Ice Cream Son Day**", which promises to be great, delicious, fun! All are welcome to join us.

May 10th - 10:45am Mrs Sandra Oldroyd will lead worship

May 17th - 10:45am Mr Andy Finch will lead worship

May 24th - 10:45am Rev Sue Pegg will lead our celebration of Pentecost

May 31st - 09:30am Mrs Kimm Brook will lead Bible study on the parable of the Rich Fool

May 31st - 10:45am Mrs Kimm Brook will lead worship for all about Father, Son and Holy Spirit

**All are welcome!**

*Kimm Brook*

.....

## Our Palm Sunday Service with Shepley donkeys



MARY AND ANGEL ARRIVED IN GOOD TIME FOR EASTER, this year at Shepley Methodist Church when we were joined for the first part of our Palm Sunday Service by our two special Shepley donkeys called Mary and Angel. On Palm Sunday we remember how Jesus rode into Jerusalem on a colt and was greeted by a crowd waving palm branches and shouting Hosanna! God bless him who comes in the name of the Lord! Everyone received a Palm Cross during the celebration. *Revd Sue Pegg*

# We Are: Shepley Library

## Don't miss out on some FREE events

We are:  
**Kirklees  
Libraries.**

### Spring Crafts and Library Trail

**Thursday 28th May 10:00am-1:00pm and 2:00pm-5:00pm**

Crafts and activities for all the family. Free event, drop in, no need to book.



### Craft Workshop Session – Needle Punched Felt

**Thursday 21st May 2:00pm-5:00pm** refreshments available, no need to book, suggested £5 to cover materials. Hosted by Shepley Library Volunteers.



### Wellbeing Workshop Session - Thursday 14th May 2.30pm-4:00pm

Learn how to use essential oils to balance your chakras. Make your own bespoke blend (5ml) for use as a smelling tissue, perfume or massage oil. All materials carefully sourced, full guidance and information provided. Suggested donation £5 to cover materials. Over 18s. Hosted by Shepley Library volunteers, book a place by calling Shepley Library or DM Sharon 07385748259.

### Coffee & Conversation



**Thursday 21st May 10.30am-12.00noon**

James Smith, the MD of Shepley Spring shares the fascinating history and science behind the UK's largest family-owned bottled water supplier.

### Family History & Ancestry One to One Support Session

**Friday 29th May** slots are limited please call the library to book a space. Hosted by Shepley Library volunteers.

### Shepley Village Magazine is now available online!

Back issues from 2018 to the current edition are now available via the Kirklees Library online catalogue: [kirklees.gov.uk/libraries](https://kirklees.gov.uk/libraries) – “catalogue search” – “search books and access your account”. Or scan the QR code.



### Regular Events:

**Rhyme Time:** sessions are held each Monday at 2:30pm.

**Lego & Duplo Club:** every week, Friday 2:00 – 5:00pm, and Saturday 10:00am – 12:00pm. All welcome.

**Games for Grown Ups:** every Thursday 10:30pm – 1:00pm.

**Craft Taster Sessions:** 3rd Thursday of every month.

**Family History & Ancestry:** One-to-one support sessions, the last Friday of the month, please ring the library to book a slot.

Contact: Tel: 01484 414868. Use our Linktree address to stay up to date and for access information and resources: [linktr.ee/kirkleeslibraries](https://linktr.ee/kirkleeslibraries)

Normal Hours: Monday 1 - 5pm, Thursday 10am - 5pm (closed 1-2pm), Friday 2 - 5pm, Saturday 10am - 12noon.

# Thank you for your funding support



We are very pleased to announce that the Rural Veterans Hubs have been granted funding from the following:

British Forces Broadcasting Authority  
Kirkburton Parish Council  
Shepley Women's Institute  
Denby Dale Inner Wheel  
Army Benevolent Fund



The funding we have received will go a long way towards helping our veterans. We are planning a trip to the National Memorial Arboretum so that our veterans can pay their respects to their fallen comrades. This is a beautiful, tranquil place to visit with all the regiments having their own gardens and statues. We have hired a coach and, will this year, be taking some of our more physically disabled veterans. In the past we have taken a minibus but that has not been suitable for all. We will also be taking our veterans to military museums and other places of interest. We have some veterans that due to their disability don't get a chance to go out, some veterans who have been socially isolated, and some with mental health problems who now feel able to socialise and feel safe in the knowledge that we are there for them.

Our hubs ensure that our veterans have a place of safety, sanctuary and support. We also have a Carers Cafe which helps support carers of our veterans.

The funding we have received means a lot to us and we are very grateful for the support of our local community and others who have made it so much easier for us to run our service.

On behalf of the trustees, and our members we would like to say a big thank you to you all.

We are always looking for new members so please feel free to contact us on the number below if you are interested in meeting others for brews, food, banter and friendship, support and help.

*Linda Rudkin*  
Founder and Trustee Rural Veterans Hubs  
Telephone: 07394 60371  
Email: [ruralveteranshubs@gmail.com](mailto:ruralveteranshubs@gmail.com)  
Charity No: 1204103



---

## Readers' Letters

### A welcome thumbs up for the magazine

Just a quick note to express my continuing appreciation for the magazine.

I've lived in a fair few places and by a country mile, this is the best community magazine I've seen. The production values and content are top draw, and I know rely on volunteers.

Well done.

*Andy and Sharon Lowther*

Magazine Team – Thank you for your kind comments. We appreciate you taking the time to let us know.

# Community volunteering at the station



A clear morning on 14th April 2026 allowed everyone to make good progress and complete the painting of the handrails at Shepley Station. The work was done by ten volunteers plus ISS (Northern's main contractor for work at stations).

Shepley Station Adopters kindly gave their time to help paint the station's railings and litter pick. Karen, a volunteer from Mitie, came all the way from York to help. Three volunteers from Penistone Line Partnership also assisted.



Nick's team from ISS cleared the vegetation along the bridge. This isn't within Northern's station lease area, so this was also done voluntarily with no charge, thanks to Danielle Clarkson at Northern, who arranged this and helped to paint the handrails.

Kind regards  
*Sarah Wells* - Community Rail Officer  
Penistone Line Partnership



I just wanted to say a massive thank you to all the volunteers who helped at Shepley Station in April who painted the handrails, and to Nick and the team from ISS who provided us with support and equipment and cleared the bridge of vegetation making it cleaner for customers and cars to use.

We managed to get it all done in good time and the weather held out for us! Little things like this make a big difference, with many customers complimenting the painting as we were doing it.

Thanks again all 😊 Dani - Danielle Clarkson - Regional Community & Sustainability Manager East Region



## Shepley Village Association

# Summary of the meeting held on 14th April



There were five present at the meeting plus a police officer. Eight people sent their apologies.

The police officer spoke about the dangerous and irresponsible parking near Shepley First School entrance.

The finance balance is £6637.66 of which £2965.56 is ring fenced leaving £3672.10 available.

The Friends of Shepley Station spent a productive day at the station on 14th April with a team from Network Rail. The station was tidied up, handrails painted and the vegetation cleared from over the bridge. The Outline Business Case regarding the 'Levelling Up Funding' is due to be published in the next few weeks.

A litter pick near the Sovereign is planned for Saturday 9th May at 10.30am. Meet at the Sovereign.

The plan to have flags/lights for Yorkshire Day is moving ahead with good responses from local businesses.

It is hoped that a new team to provide maintenance at The War Memorial has been established.

Further discussions have taken place regarding the services on Remembrance Sunday, and it is hoped that there will be a service on Remembrance Day at the War Memorial.

The proposed development on Eastfield was discussed and the reports from Highways and the Environment Agency are awaited.

We are currently waiting for a date for the installation of a speed camera on Lane Head Road.

Next Meeting Tuesday 12th May 2026 at 7.30pm in the library.

*Jim Reid*



Sign up to  
'Friends of  
St Paul's  
Hall'



**SIGN UP!**

Join Friends of St Paul's Hall to hear about volunteer days, improvements, community events & projects

[sites.google.com/view/stpaulshallshepley/](https://sites.google.com/view/stpaulshallshepley/)  
@stpaulshallshepley  
St Paul's Hall Shepley

**VOLUNTEERS NEEDED**

For hall enquiries Katie Bannister 07895 430374  
or stpaulshallshepley@gmail.com

# Shepley Folk

## Lucy Kilroy

After you've spent two minutes in Lucy's company you'll not want to use the phrase 'I haven't had time' again! Lucy is one of those characters who manages to fit in working part time, whilst running her own business, studying and bringing up seven children. Read on to find out more about her family life in our village.

### Tell us about yourself and what brought you to Shepley.

I'm a Huddersfield girl. I was born in Deighton, then the family moved to Berry Brow and Meltham. When I left home I bought my first house in Slaithwaite, then Netherthong and Storthes Hall Lane. I went to Berry Brow Infant School, Honley High and Greenhead to take my 'A' levels and after a stint in a pharmacy I ended up at Kirklees, eventually helping people set up their own business. I still work part time with Kirklees which brings in some regular money, but my passion is my vegan food and ice-cream businesses which together with looking after our large family takes up a lot of my time.

My husband Ian and I have a blended family, together we have 7 children. We married in Las Vegas 6 months after meeting in 2022 and although we struggled to find a house big enough to accommodate us all we eventually bought Hall Royd House from Rick Welburn who many people in the village seem to know. The house at that time was separated into two semis but we've knocked it through into one and are now lucky to have seven bedrooms, which we need because our daughter Andie arrived last year so now our family is complete. I love living here and had hoped that we might be able to lease part of the farmer's field adjacent to the house and get some more animals to go with the hens and

turkeys we keep. We were really disappointed to find out the field on Eastfield may be sold for housing, but I still dream of owning my own animal sanctuary and vegan farm shop one day.



On top of my other activities, I'm also doing a HNC in Counselling and Applied Psychology at Calderdale College. I lost my mum last year whilst I was pregnant, her death was sudden and I struggled with the bereavement whilst having a new baby. I personally benefited from counselling and this inspired me to be a counsellor myself. Whilst I'm on my course, I will be volunteering at Auntie Pam's family centre in Huddersfield supporting new mums.

### What were your first impressions or early memories of our area?

When I was at Berry Brow Infants school we came to Cliffe House on a school trip and I can vividly remember what a great time we had pond dipping behind the big house. I never thought that one day I would live here, but now the village is a big part of my life, my sister has moved here recently too.

### Has our locality influenced your work at any time?

Visiting a local organisation spurred me on to set up in business. I have been a vegetarian since my teens

then started thinking about becoming vegan. It was a visit to 'Pigs In the Wood' near Scissett that finally persuaded me to go ahead, but once Ian and I had decided to change our diets, we were frustrated by how many ways our lives had to change.



We love eating out but struggled to find good places and vegan ready meals were almost non-existent, so I started Hall Royd Vegan Food Co. ([hallroyd.co.uk](http://hallroyd.co.uk)). Our most popular offering has been our Friday Night Feast boxes. I have a round of faithful customers extending from Huddersfield to North Kirklees and south to Sheffield and Barnsley. We put out boxes sporadically so the best place to see what's coming next is to check our social media. We realised because of our young family, a lot of our time involves finding places to enjoy ice cream, but we found it could be very difficult to get vegan ice-cream that wasn't boring and so, identifying a gap in the market I started a new enterprise called 'The Yorkshire Vice-Cream Company'. We sell in 12 different locations including local shops like GGs deli in Denby Dale, MB Farmers Market in Scissett, the Windmill Café and Pear Tree Pantry in Cawthorne. We also supply as far away as Hebden Bridge and Oakwell Hall. Ten percent of the profit from both the ice-cream and vegan food range goes to local animal rescue charities, and one is Pigs in the Wood funnily enough!





**Do you follow any local sporting teams?**

Our lives are pretty much dominated by football. My husband Ian has two podcasts relating to Huddersfield Town, "And he takes that chance" and another called "The Town Social". Until recently he was Head Coach at Grange Moor Saints AFC and now he plays for Shepley FC. The children also play. So yes, we are very much involved in local football.

**Is there a favourite Yorkshire celebrity or character that you most admire?**

Jane McDonald – what a woman! My Great Gran lived in a tiny house on Westgate in Almondbury. The house was so tiny, when I lay on the floor I could touch the wall on both sides! She had a tiny kitchen which we used to bake in and the house often used to smell of burnt cakes. Anyway, there would always be a Jane McDonald tape playing, hearing her always brings back such happy memories and watching her cruising programmes is my Sunday afternoon pleasure!

**Do you have a favourite walk around our region?**

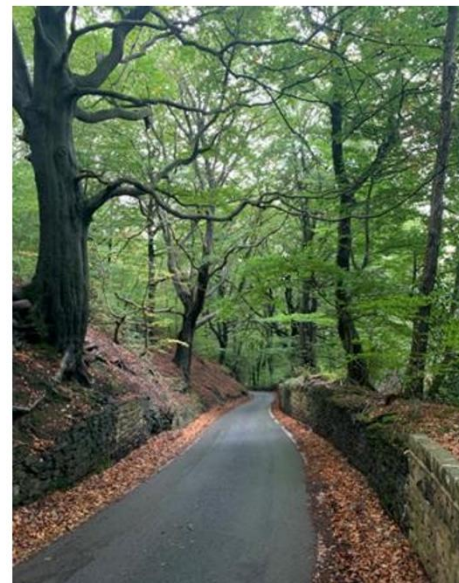
We love going up to Hade Edge and walking around Holme Styes reservoir. Its great because its quiet, we can let the dogs off the lead, the children think the Gruffalo lives there

so they mostly behave for the duration and the pine trees look especially magical at Christmas. We love packing the bikes into the van and cycling down the Trans Pennine trail at Dunford Bridge. In good weather we take a picnic and sit near the wooden sculptures they have carved out there and swap books in their little library hut. We also like walking to the park in autumn, picking the fruit from the trees and making some kind of crumble.



**What's your favourite view or scene?**

My favourite view is driving down the road into Stones Wood and seeing that there are no cars coming towards me (or if there is a car it's my worst view!). I also love how the trees tell a story of the seasons. My second favourite is walking up towards Shepley Carr and Upper Cumberworth with views down the valley towards Huddersfield and across to Emley Moor and I can see my house from here.



**If you were entertaining visitors to our area, where would you take them?**

I have lived in Slaithwaite and it's a great place to go for the day. We'd start at the Acorn and Pip for a coffee and then walk along the canal to Marsden and back. Perhaps stopping at the Peel Street Social for a bite to eat. If we have babysitters we'd go into Holmfirth for the evening; we enjoy going to Coopers Yard.

**Do you have a favourite local shop?**

We like browsing around the charity shops in Holmfirth and can often pick up some real bargains. I also really like shopping at 'Grow' which is an eco-friendly re-fill shop in Skelmanthope. They have lots of vegan, gluten free and organic options and sell re-fillable dried foods and washing powders etc. GG's Deli in Denby Dale and Holmfirth have lots of vegan options – as well as delicious vegan ice-cream so I hear!



**Where is your favourite place to eat or drink?**

Together we have seven children but thankfully with the help from our parents, Ian and I are lucky enough to go on date nights every fortnight – something that's very much needed. Given that opportunity we will head to Sheffield to the Church Temple of Fun which is a vegan bar and café in Neepsend. The bar serves vegan friendly drinks and even their Sunday roasts are vegan

<https://templeof.fun/>

**What's your idea of a perfect weekend?**

First of all, for someone to look after all my children and there to be no problems!

We'd set off on Friday and spend the day walking around Skipton, shopping in the market and eating (obviously) and then we'd go to Beck Hall in Malham which is a fully vegan hotel and restaurant and the food is amazing. Then we'd drive to Whitby, walk to Sandsend, walk up the steps to the abbey and stay there on Saturday night before driving home.

...however, it's going to be a long time before this is a possibility but it's nice to dream!

**Are there any special activities you enjoy doing at certain times of the year?**

Christmas is my time to shine. Whilst it's so easy to be swept up in treating the kids we are very strict with our budgets, and things which we used to do like lovely Christmas train rides have just become unaffordable for us now, but we do lots of other fun stuff. Every Christmas activity, writing

cards, decorating the tree, crafting etc is made into an 'event' with music and festive snacks. We put our tree up in November. I have accumulated so many decorations that we have to start early; every child has their own Christmas tree and we have four downstairs. The part we enjoy the most is a few days before Christmas we do a mass baking session. It's like a factory. We package it up into little hampers and each child has their own job which could be wrapping, writing labels etc. Then we drive around that night delivering to our friends and family, singing Christmas carols and looking at the lights.

On Christmas Eve we go for a long walk and take a picnic, then come home and everyone gets in their pyjamas. We watch Elf and we have a buffet in the living room in front of the fire, then before bed read 'The Night Before Christmas' to everyone

We haven't managed to get to a Christmas Carols on the village green yet but am hoping to do so this year.



Thank you, Lucy, for sharing your story and experiences of living in Shepley.

If you would like to contribute to this feature and share your happy thoughts about our village and surrounding areas, please email the Shepley Village Magazine at [shepleysmag@gmail.com](mailto:shepleysmag@gmail.com) and leave your contact details.

**- THE -  
RUSTY BULL**



To make the most of your visit, we highly recommend booking a table at our on-site Restaurant - The Rusty Bull, which has received a TripAdvisor Travellers' Choice Award 2021. Only 10% of all restaurants featured on TripAdvisor are given the award, so don't miss out.



Hinchliffe's, Netherton, Huddersfield, HD4 7LE

[www.therustybull.co.uk](http://www.therustybull.co.uk)

Tel: 01484 668949



**HINCHLIFFE'S®**

EST. 1929



Come and see us for a warm Yorkshire welcome and to stock up on some of our customers' favourites, such as our award-winning Home-reared Beef (3 Stars Great Taste Awards), homemade delights at our Deli Counter, in-house Bakery, a fully stocked Green Grocers and a Wine Selection to rival the best!



Hinchliffe's, Netherton, Huddersfield, HD4 7LE

[www.hinchliffes.com](http://www.hinchliffes.com)

Tel: 01484 661231



Commercial Sanitising Specialists

## Specialists In

- Carpet & Upholstery Cleaning
- Oven Cleaning
- Deep Cleans
- Commercial Cleaning

5 Star Customer Rating



Commercial Sanitising Specialists



Phone: 07929189329

Email: [info@csscleaning.co.uk](mailto:info@csscleaning.co.uk)

Office: 5 Woodhead Court, Shepley



Double Glazing specialists  
Expert Door fitting and repairs  
Locksmiths  
Never Beaten for Quality or Price



John Allen - Window Repairs

07885 629500 | [allenwindowsuk@gmail.com](mailto:allenwindowsuk@gmail.com)

Chris Allen - Window Installation

07921 561531 | [chris@allenwindows.co.uk](mailto:chris@allenwindows.co.uk)



**Holmfirth CARPETS SHOWROOM & TRADE SUPPLIES**  
SHEPLEY  
Your Local Friendly Family Run Flooring Specialist

### CLEARANCE STOCK & TRADE SUPPLIES

- Roll Stock
- Cushion Floor
- Roll Ends
- Solid Wood Flooring
- Laminates
- Rugs
- FREE Measuring & Quotes
- Sample service
- Delivery available
- Full fitting service

For home appointments, where we bring the showroom to you please call **01484 603082**

Unit 9, Sovereign Business Park, Barnsley Rd, Shepley, HD8 8FW (Behind The Sovereign Petrol Station)  
[www.holmfirth-carpets.co.uk](http://www.holmfirth-carpets.co.uk)



## Shepley Self-Storage

CCTV

Secure Location

Easy Access (24H)

Short, Medium, Long-term Contracts Negotiable



Contact

Matt — 07885655033

[mattwilkinson123@btinternet.com](mailto:mattwilkinson123@btinternet.com)

**Advertise here  
to reach all  
Shepley households.  
Contact:**

[shepleysmag@gmail.com](mailto:shepleysmag@gmail.com)

## KIRKBURTON EYECARE

Your local family- friendly opticians

Some of the services we provide

NHS & PRIVATE EYE EXAMINATIONS

CHILDREN'S EYE TESTS

CONTACT LENSES

EMERGENCY EYE CARE

Telephone: 01484 282565  
15 George Street, Kirkburton HD8 0SF



Caring for the Community

Organise Your Medication With Our **FREE** Dosome Tray

**01484 681 534**

Find Us Inside: New Mill Post Office  
6 Huddersfield Road, New Mill, Holmfirth, HD9 7JU

FREE PARKING - DIRECTLY OUTSIDE



## Repeat Prescription?

Simple Solution...

- WE ORDER...
- WE COLLECT...
- WE DELIVER...

**FREE**

Sign up **TODAY** to our **FREE** prescription collection & delivery service to your home or workplace

REGISTER ONLINE AT  
[www.newmillpharmacy.co.uk](http://www.newmillpharmacy.co.uk)

Mon-Fri: 9am-6pm

Sat: 9am-1pm

Sunday: Closed

## Nigel Hoyle Ceramics at Scipeclei Pottery

High Quality handmade Stoneware Pottery  
Textured wall panels featuring iconic and abstract  
viewpoints to collect or buy as a unique gift:



Visit the studio:  
Call: 07486014100

Or visit <http://www.nigelhoyleceramics.co.uk>



## WOODSOME VALLEY SELF STORAGE

**Huddersfield's Premier Storage Facility**  
**Modern and Secure Storage For Everyone's Needs**

Dogley Mills · Penistone Road · Fenay Bridge · HD9 0LE

[info@woodsomelvalleyselfstorage.co.uk](mailto:info@woodsomelvalleyselfstorage.co.uk)

01484

[www.woodsomelvalleyselfstorage.co.uk](http://www.woodsomelvalleyselfstorage.co.uk)

442804

## Electrician

Call Now - 01484 212093

[WWW.JPELECTRICAL.NET](http://WWW.JPELECTRICAL.NET)

- Extra Lights & Sockets
- Experts on Fuseboards
- Rewires
- New Installation
- Smoke Alarms
- Landlord Reports
- Electric Heaters
- Fault Finding
- Small Repairs
- Garden Lights

- ✓ Fully Qualified, Insured & Registered
- ✓ Lifetime Guarantee
- ✓ Reliable & Friendly Service
- ✓ Flexible Hours
- ✓ Satisfaction Guaranteed
- ✓ Proud to be Local

**No Job Too Small**



## RST ROOFING & Maintenance

- Re-roofs & Repairs
- Velux Window Installations
- Fascias & Soffits
- Free No Obligation Quotes & Roof Inspections
- Fully Qualified
- Insured
- City & Guilds

Leigh 07934 001 590

OR

Ben 07795 082 748



[rstroofing@outlook.com](mailto:rstroofing@outlook.com)



## restörr

physio | pilates | yoga



- Always welcoming new clients.
- No GP referral needed.

T. 07513 222874  
E. [hello@restorrhealth.co.uk](mailto:hello@restorrhealth.co.uk)  
W. [www.restorrhealth.co.uk](http://www.restorrhealth.co.uk)



Barncliffe Mills, Near Bank, Shelley, HD8 8LU

**A. J. HEATH**  
**01484 604 358**



**CHIMNEY SWEEP** Established 1986  
**TEXT: 07985 144431**

## KPM SERVICES

**Plastering, Construction,  
Handyman Services,  
Gutter Cleaning,**  
Other property maintenance  
services offered.

**Kris - 07446404548**



## Deeley Mobility Services Ltd

Stairlift and Mobility Scooter specialists  
Installation Sales Service.

Tel 01484 598526

website [www.deeley.com](http://www.deeley.com)



## BEX WHITE HOLISTIC THERAPY

MASSAGE

REFLEXOLOGY

AROMATHERAPY

FACIALS

REIKI



Bridge House, Shepley  
07949 122970  
[bexwhiteholistic@outlook.com](mailto:bexwhiteholistic@outlook.com)





# GRIME GEEZER



Grime and Moss Removal  
Pressure Washing  
Roof Scraping  
Westermann Services

Jacob  
07565 695459  
grimegeezer@gmail.com



Delicious catering for every occasion

Weddings  
Private Parties  
Corporate Buffets  
Birthdays  
Funerals

Please call Ann Pearson  
Tel: 07858 321081



Domestic & Commercial Gas

**SERVICE,  
REPAIR AND INSTALL**

Mike Taylor  
07783983028  
taylorsph@hotmail.com



## CLG

### Plumbing Services



Bathroom, En-Suite  
and  
Kitchen Conversions  
Carried out to a high standard

Clem Gregory  
Telephone:  
07779 991903



- Removals
- House Clearance
- Piano Moves
- Deliveries

For a free quote or more information - call Matt

**Tel: 680151    Mobile: 07834 904263**

info@mattsmoovers.co.uk    www.mattsmoovers.co.uk

35, Heys Road, Thongsbridge HD9 7SF

## OPUS

One Team.  
Every Trade.



One Team.  
Every Trade.

Central Heating  
Boilers  
Plumbing  
Kitchen fitting  
Bathroom fitting  
Joinery  
Electrical Services



01484 613203  
contact@group-opus.com  
www.group-opus.com



- Hand Treatments
- Foot Treatments
- Facials
- Eye Treatments
- Reflexology
- Body Treatments

01484 767270

233 Abbey Road, Shepley  
HD8 8AB

copperrosehairandbeauty.co.uk



**Advertise here  
to reach all  
Shepley households.  
Contact:**

**shepleysmag@gmail.com**



- Cutting
- Colouring
- Styling
- Hair Extensions
- Bridal Hair

Book Online

01484 767270

95 Lane Head Road, Shepley  
HD8 8DD

copperrosehairandbeauty.co.uk





**JONATHAN SMITH**

**07810 410095**

**[jonnysmith646@gmail.com](mailto:jonnysmith646@gmail.com)**



LEVEL 3  
QUALIFIED



**Travelling Tailor**

Local independent tailor  
with over 15 years  
experience creating  
exquisite made-to-  
measure garments.



Edward: 0798 3719 086

[www.offthewalltailoring.co.uk](http://www.offthewalltailoring.co.uk)



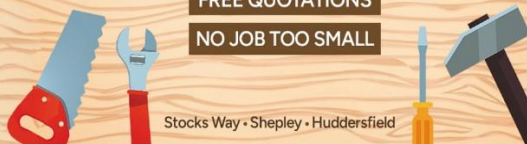
**• JAMES BENNETT •**  
**JOINERY**

For all your joinery needs

KITCHENS • FLOORING • DOORS  
STAIRCASES • PANELLING

Contact JAMES  
07766 116856 / [jamesbennettjoinery@gmail.com](mailto:jamesbennettjoinery@gmail.com)

**FREE QUOTATIONS**  
**NO JOB TOO SMALL**



Stocks Way • Shepley • Huddersfield

**Morley Rhodes  
& Wainwright**  
Funeral Directors

**Richard & Tracy Morley M.B.I.E.**

Tel: 01484 862095

Mob: 07973 622098

[tlmorley@btinternet.com](mailto:tlmorley@btinternet.com)

[www.morleyrhodes.co.uk](http://www.morleyrhodes.co.uk)

5 Radcliffe St. Skelmanthorpe, Huddersfield HD8 9AF



## SUMMERSHIRE GARDEN SERVICES

LAWNS, HEDGES, PRUNING

HANGING BASKETS FROM £20 FILLED    HANDMADE SOLID WOOD PLANTERS

KINDLING NETS 6KG £6.50 OR 3 FOR £18 FREE DELIVERY TO SHEPLEY

PRESSURE WASHING DRIVEWAYS, PATIO & PATHS

All Jobs considered please call for a quote

Telephone 07857868371 or Email [jonfrancis2606@gmail.com](mailto:jonfrancis2606@gmail.com)

**Dr. Alison J. Eden BDS**  
& ASSOCIATES

Dr Imogen Covell BDS

Dr Radika Mistry BDS

Dr Jonathan Berry BDS

**DENTAL SURGEONS**

**21, Marsh Lane, Shepley**

**Tel: 01484 606050**

Now accepting new independent patients at Shepley

SURGERY OPENING HOURS:

Monday 9.00 am – 5.30 pm

Tuesday 9.00 am – 5.30 pm

Wednesday 9.00 am – 5.30 pm

Thursday 9.00 am – 5.30 pm

Friday 9.00 am – 4.00 pm

The Surgery is closed for lunch 1-2 pm  
Wheelchair access possible but no disabled WC

**Wm Sykes**  
& SON EST. 1866

PRESTIGE  
RESIDENTIAL  
RENTALS  
AGRICULTURAL  
AUCTIONS

*The area's longest established independent  
estate agents and auctioneers.*

**TRUSTED FOR GENERATIONS**

*Open 7 days a week*

**Call: 01484 683 543**

**TO BOOK YOUR FREE MARKET APPRAISAL**

[www.wmsykes.co.uk](http://www.wmsykes.co.uk)

38 Huddersfield Road, Holmfirth HD9 3JH

REFRIGERATION  
&  
AIR CONDITIONING  
SALES/SERVICE/REPAIRS

**J.C.E.**

463 PENISTONE ROAD  
SHELLEY

**Tel: 604554**

or Mobile: 07831 151469

# Key Skills Tutoring

**Sarah Barrett**

Aged 8+ - Maths and English



1:1 Bespoke sessions designed to engage and meet individual needs; increasing confidence; motivating pupils to progress.

<https://keyskillstutoring.co.uk>

07960 608258

key skills tutoring

keyskillstutoring@gmail.com



Experienced teacher with 28 years of teaching experience in a range of settings holding additional **SEND** qualifications and **Enhanced DBS**.



travel experience

We don't just book holidays, we design bespoke journeys. Travel Experience - Bringing you the world!

Support your local independent travel agent and get in touch today to start planning your next adventure.



01484 602225  
sales@experiencetravel.net  
experiencetravel.net



115 North Road, Kirkburton,  
Huddersfield, HD8 0RL

## D L Joinery

For All Your Joinery Needs  
No Job Too Small!!

All Aspects Of Joinery  
Work Undertaken

Flooring • Doors  
Decking • Kitchens • Skirting  
20 Years Experience

**Office - 01484 604722**

**Mobile - 07751 690297**

Abbey Rd., Shepley, Huddersfield



**01484 609977**



Showroom - Sovereign Business Park, Barnsley Road Shepley, Huddersfield HD8 8BL

UPVC & ALUMINIUM  
WINDOWS  
COMPOSITE DOORS  
BI-FOLDS  
ORANGERIES  
ROOFLINE  
GUARDIAN ROOFS



**01484 609977**



ROOFLINE  
WATER & WASTE  
TIMBER  
AGGREGATES  
PLASTER  
INSULATION

**FREE DELIVERY  
TRADE & DIY**

Sovereign Business Park, Barnsley Road Shepley, Huddersfield HD8 8BL

## Letter from our Member of Parliament

# Women voice their experiences with the NHS



I am writing this following the Easter Bank Holiday Weekend, having joined a number of events across our area. You could really feel the impact of the sunshine and community spirit on people - even the grumpiest Yorkshiremen (my dad included) were smiling.

Last month, I was pleased to host a roundtable to discuss women's health issues. It was a deeply moving, constructive event, in which local women were able to speak about their experiences with the NHS, discussing issues with getting diagnosed, treated, and being taken seriously by doctors. I am taking the findings of this event directly to the Secretary of State for Health and Social Care to help feed into the upcoming Women's Health Strategy.

I also had meetings with the Deputy Mayor for Policing, Alison Lowe, and with the West Yorkshire Police Chief Constable, Sir John Robins, to discuss plans to use increased funding to improve neighbourhood policing and tackle anti-social behaviour, as well as the policing of speed limits and road safety across our area.

I was also pleased to see some positive announcements regarding bus services ahead of the roll out of the Weaver network. In collaboration with Google Maps, the Government is rolling out changes to give you live information on where your bus is, and how long it will take to arrive at your stop, so you no longer have to just stand and hope the bus turns up. As increased funding starts to ensure buses are more reliable, changes like this will help local people be able to plan around bus services.

The past month has also been an exciting one in the Government's wider work for communities and areas like ours. As an MP, lengthy legislative procedures can be frustrating, slowing down the changes you were elected to make, but in April we saw many of our manifesto commitments become law. Last month, we saw free breakfast clubs expand, wage increases for millions of people, increases in the state pension, improved rights to statutory sick pay, day one rights to paternity leave, and more parental rights to bereavement leave following the death of a partner.

We are also taking action to tackle unfair subscription costs. Too often, subscriptions can feel like a scam, with free trials rolling over with no warning, cancellation requiring lengthy phone calls, and fine print in the contract locking you in for much longer than advertised. We are changing this, introducing new laws to make it easier to cancel subscriptions and get refunds for unwanted auto-renewals. With around 10 million unwanted subscriptions currently active across the UK, this could save the average person nearly £170 a year.

From increased rights in the workplace, when renting, and when dealing with subscription companies, together, these changes will really help families with the cost of living.

As ever, if there are any issues that my team and I can help with, send me an email at: [jade.botteril.mp@parliament.uk](mailto:jade.botteril.mp@parliament.uk) and I will see what I can do.

---

## Planning Applications

If you would like to see more details about a planning application or make a comment just enter the planning application number e.g. **2025/91234** on the Kirklees website where it says search for a planning application.

If you have any queries about planning matters, your local Kirklees Councillors, John Taylor, Richard Smith & Bill Armer would be happy to help.

<b>2026/90879</b>
West Royd Farm, West Royd, Marsh Lane, Shepley, Huddersfield, HD8 8AY
Certificate of Lawfulness for existing use of garage/ancillary building for uses incidental to residential dwelling.
Received 30 <sup>th</sup> March 2026

## Councillor's letter

# Local Plan – issues over completion & consequences

April is always an unusual time as a Councillor as the Council moves into pre-election mode, prior to the local elections on Thursday 7th May. The Council itself needs to remain completely impartial and one of the consequences of this is that a lot of meetings and decisions are postponed so that they do not appear to give the impression of favouring one group or another.

However, as Councillors this does give us more time to be visible in the community as all parties and individuals who are interested in standing for public office seek your support. I do enjoy the opportunity it gives me to be out and speaking with people and the better weather certainly helps!

Not all meetings are postponed and the Homes and Neighbourhoods Housing Improvement Board that I am a member of continues as we monitor progress on tackling issues about the safety and conditions of our Council housing stock. This was established following the well documented tragedies at Grenville and the death of a young boy due to the failure of his parent's landlord to address damp and mould in his property. I am also stepping in for a colleague and attending a Planning Committee meeting later this month as well as chairing a meeting of the Corporate Governance and Audit committee which will be looking at the internal and external audit plans for the 2026-27 financial year.

Support for our school remains a focus for me. Whilst plans for addressing the bike sheds, which are currently fenced off in the playground progress, I have also secured agreement from the Strategic Director for Children's Services to come and visit the school with me to look at our plans for not only this, but also for bringing the caretaker's house back into use, which is a longer term plan, and I am keen to ensure this has his active support.

Planning and housing remain a large part of my workload, and we received some bad news recently in this respect. Firstly, you may have seen a proposal for housing in Birdsedge, in the fields across from the school. The number of houses isn't yet clear as they are only seeking outline permission for access to the site from Penistone Road, but this will undoubtedly put more traffic and pressure on the Sovereign junction and all associated roads like Carr Hill Road.

To add to this the Government has announced changes to the process for developing a Local Plan, that is the document which specifies where house etc can be built. Whilst the new process, which can be seen as adding more red tape, isn't the main problem, the real issue is that they have stated that any Council which is in the process of developing a new plan (like Kirklees) must be able to complete it by the end of 2026 or else fully comply with the new process.

Kirklees cannot complete the plan by the end of this year which means we have to go back to the start again and whilst some of the analysis that has been done can be reused, the timescales have gone backwards, and we are unlikely to have a plan in place until April 2029 now. The reason this is important is that without the plan the Council has less control over where houses are built and given the Government's weakening of greenbelt protections it is likely we will continue to see more proposals in the next couple of years in our village and our neighbours, as developers take advantage of the Council's weakened defence. As I have said many times, we do need to build more houses, but they need to be in the right place, where there are existing services and have the infrastructure to cope, not in rural locations like this new one in Birdsedge.

I will continue to push back on any proposals which are not sustainable and will continue to support local residents in opposing such developments like our own campaign to prevent the Bank's proposal on Eastfield, and the one which I've helped in Stockmoor where we await the outcome of the public inquiry into the developer's appeal against the Council's refusal of their proposal.

Contact: [johnjtaylor29@yahoo.co.uk](mailto:johnjtaylor29@yahoo.co.uk) or my Kirklees email [johnj.taylor@kirklees.gov.uk](mailto:johnj.taylor@kirklees.gov.uk) or  
Tel: 07831 810096

# Cliffe House Woodland Volunteers

## A croaking good sculpture

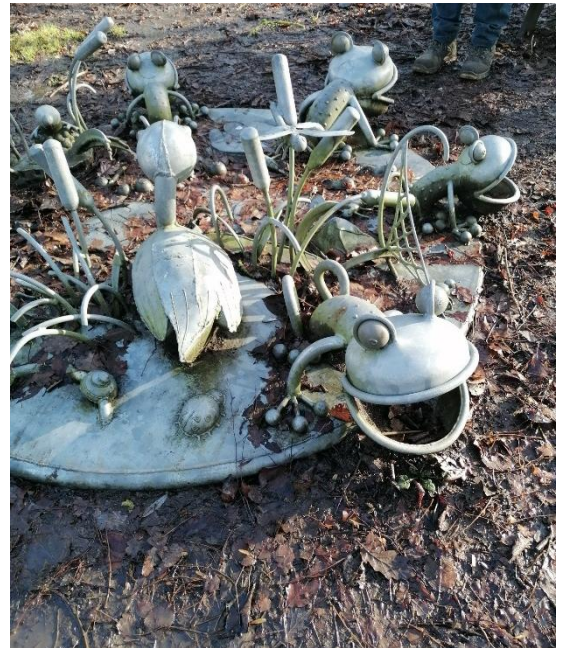


The Woodland Volunteers at Cliffe House have been aware of a metal sculpture lying in the woodland by the three ponds and partially covered in leaves, as seen in the photo here.

An article in the weekend Yorkshire Post magazine about Mick Kirby-Geddes's use of recycled metal materials for his commissioned sculptures re-awakened one of the volunteer's thoughts about the forgotten piece in the woodland. Could the frog be by Mick Kirby-Geddes, a well-known metal sculptor based at Sculpture Lounge in Holmebridge?

I contacted the artist to see if this was the case. He confirmed that he had made it approximately 20 years ago, mentioning that there should be his initials and a date in a non-

conspicuous place. This information was found and confirmed by the volunteers.



The sculpture which originally used to be in the adventure playground was subsequently moved to its present position as it had more of a connection to this area. It was decided, after consultation with the house and outdoor managers, to raise it off the ground for everyone to better appreciate it.

The sculpture has been set on three recycled posts and subsequently secured by three brackets on the sculpture. Cleaned down it now looks super in its new home.

The area around the sculpture will be levelled and covered with bark/wood chippings and new picnic benches added if an application to Natural Kirklees for a grant is successful.

*Geoff Ryder* - Woodland Volunteer



## Full coach to Hull/Beverley in March

Concerns about the weather were left at home as we travelled to East Yorkshire. It was cool and grey but DRY! I'm also delighted to say we filled every seat on the 53-seater coach.



Our first stop was Hull. It is a fascinating city with lots of heritage, around the Museum Quarter. We visited the Streetlife Museum of Transport. It focuses on over 200 years of transport but is arranged around streets and Victorian style shops, making it a really interesting place to wander. I couldn't

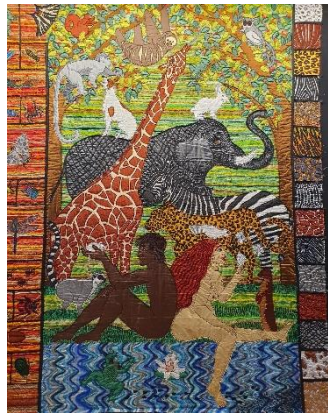
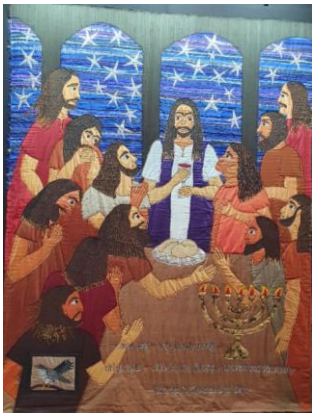


not take a photo of Hull's iconic cream phone boxes, although I doubt they are in use these days.

For those that like to shop, the coach was parked conveniently close to the Princes Quay shopping centre. We also visited Hull Minster, place full of history and heritage, built in 1285.



After including a reviving cup of coffee and cake we headed for our next stop at Beverley. This is a lovely market town with cobbled streets, a market square and lots of individual shops to browse and browse (and buy)! We did.



Beverley also has a Minster, so we wandered in there and were so pleased we did! Currently there is an amazing exhibition showing



called Threads. One side tells the story of the Creation, and the other side is the Life of Christ. Every frame is designed with various textiles and took over

ten years to make, by one lady. The colours were stunning and we were so glad we saw it.

After another coffee and something to eat, it was time to head back to the bus, having enjoyed a very successful visit.

Our next Heritage Visit is on the 24th June and we are going to Ashbourne and Matlock, two lovely places. I'm hoping for another full bus, so make sure you book your tickets as soon as you can.

*Carol Warham*

# The Upper Dearne Woods

## A little bit of history

The woodlands on our doorstep are ancient, that is they date back more than 400 years. That is not to say that the trees are that old, in fact most date back 150 years or so, but that the site has probably had woodlands on it for at least that long. They have much to offer in the way of scenic paths, varied views, streams and a pond with a variety of wildlife and fauna.



In the early days, the wood was probably worked as a coppice, harvesting our native oak, the sessile oak, along with hazel and holly for industrial and everyday use. Hard to believe, but the holly was grown as fodder. The cattle must have been very tough in those days!

With coppicing, you would work to a cycle of 10-15 years, and you would cut the oak and hazel down to harvest as staves, posts and wattle for fencing. You would, though, leave some oaks to grow to full height as timber trees to use as beams for house building. We think this pattern carried on until the mid-1800s, when a local millowner, Walter Norton, took ownership and converted the woods to leisure uses.



You can still see traces of the earlier workings in the woods today: there are coppiced oaks and hazels and remains of charcoal burning and sawpits. The next few months, April and May, are a good time to go



down and look round as the woodlands are in full bloom. Particularly impressive are the banks of white wood anemone which are usually a strong indicator of the antiquity of the woods.

If you want to find out more or get involved, we can be contacted on our email: [upperdearnewoods@gmail.com](mailto:upperdearnewoods@gmail.com)

Otherwise, we normally have working parties on the 3rd Sunday of each month, meeting at 10.00am at the top of Greenwood Lane. (just up from the entrance to the recycling centre).

*Geoff Higgs Chair*  
Upper Dearne Woods Conservation Group

## In the Library

# Football, friendship and shared memories

Our recent **Football Memories session at Shepley Library** on Wednesday 15th April was a real winner! The morning brought together a great “five-a-side” team (with plenty of subs), ensuring everyone could get involved and enjoy the chatter at their own pace.



Memories flowed freely, with 90 minutes of football videos playing, there was lots of lively chat and reminiscing about classic matches, favourite players, and unforgettable moments from the past.

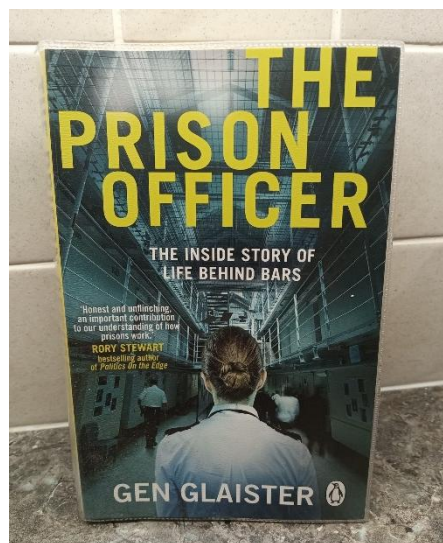
A special mention goes to **Keith**, for facilitating the session and whose delicious home baking was thoroughly enjoyed by all!

It was a fantastic morning of football, friendship, and shared memories —and we’re already looking forward to the next one; Wednesday 17th June at 10.30am.

*June Lawson: Customer Service Manager*

## The Prison Officer by Gen Glaister

I have enjoyed listening to the monthly talks taking place at the library this year. The first of the ‘Coffee and Conversation’ talks in February was by retired prison governor Graham Smith who regaled us with tales from his firsthand experience of working in prisons. Like many people I had very little if any knowledge about daily life in prison and I found it an interesting and informative talk.



A few days later whilst in the library I spotted this book on display – *The Prison Officer: the inside story of life behind bars, by Gen Glaister.*

At the age of just 23, and only three months after leaving university, Gen achieved her ambition of becoming a prison officer in a male prison. This had been her dream since she was 15. I was intrigued as I found it unusual that anyone would set their heart on this from such an early age. Phrases which jumped out from the blurb were, ‘*honest and unflinching*’, ‘*shocking and gripping*’, ‘*searing account*’.

I enjoyed reading it although enjoy is perhaps not the right word. I felt I had experienced some of the reality, the futility, the cynicism and the chaos of the lives of those behind bars. Gen faces frightening and challenging situations and uses humour and empathy to bring to life the character of each of the different inmates. It is not a read for the faint-hearted, as it contains violence, self-harm, despair and destruction but it gives an honest if not brutal insight into the problems facing both staff and inmates. I found it a compelling read and feel it has given me a small insight into a world very much removed from the world in which most of us live here in Shepley.

*Pam Chew*



*Everything you wanted to know but were afraid to ask*

## What are statins?

Statins are a class of medications that lower levels of low-density lipoprotein (LDL) cholesterol, often called “bad” cholesterol, in the blood. High LDL levels can lead to a build-up of plaque in the arteries, increasing the risk of heart attack and stroke.

Statins work by blocking an enzyme in the liver responsible for cholesterol production. As a result, the liver removes more LDL cholesterol from the bloodstream. Since the body produces most cholesterol overnight, statins are often taken in the evening or before bed.

## Why should I take a statin if I’m offered one?

Cardiovascular disease is one of the leading causes of death worldwide. Lowering your cholesterol with a statin reduces your risk of developing serious complications.

They are commonly prescribed for people with conditions such as diabetes, high blood pressure, or chronic kidney disease, as well as those with other risk factors.

Statins only work while you are taking them, if you stop, your cholesterol levels are likely to return to previous levels.

## What about the risks?

Statins are considered safe for most people. As with all medications, some people may experience side effects such as muscle aches, mild digestive issues, or raised liver enzymes.

There are several types of statins available, and treatment can be tailored to suit the individual patient.

## Where can I get further information?

Speak to our clinical pharmacy team or visit the NHS website for more information:

<https://www.nhs.uk/medicines/statins/>



*Quick tips to get the most from your GP Practice*

**Be prepared:** Before your appointment, consider writing down your symptoms, what you’re worried about, and what you’d like to discuss. Please let reception know if you need to talk about more than one issue.

**Be on time:** Arriving late or being unavailable for a scheduled telephone appointment can affect other patients. Unfortunately, it may not always be possible to see a clinician if you are late.

**Cancel if needed:** If you can’t attend your appointment, please let us know as soon as possible so it can be offered to another patient.

**Use the NHS App or website:** If you’re comfortable using a smartphone or computer, you can book or cancel appointments, order repeat prescriptions, and view test results online using the NHS App or NHS website.

**Order repeat medicines on time:** Request your repeat prescriptions in good time so you don't run out, and only order what you need.

**Join the Patient Participation Group (PPG):** Shepley Health Centre has a friendly patient group that provides feedback on our services and helps shape future improvements.

### Welcome to Dr Rajarshi Bose

We are pleased to welcome Dr Rajarshi Bose, who joins us for his final placement before qualifying as a GP. Dr Bose brings many years of experience as a hospital doctor, as well as experience in other GP practices. He is available for consultations on Wednesday, Thursday, and Friday.

He replaces Dr Clayton, who has now moved on to her next placement. We thank her for her contribution and wish her all the very best, she has been a valued member of the Shepley team.

### Stay connected

Have your say – and stay informed

We work closely with our **Patient Participation Group (PPG)** to ensure our services reflect the needs of our community. Their feedback helps us improve how we deliver care and communicate with patients. Recent feedback has highlighted interest in:

- Easier access to appointments
- More health and wellbeing information
- Regular updates about practice services

We are always keen to hear from more patients. Stay connected.

To receive the latest practice news, health advice, and local updates, or to find out more about joining our PPG, simply scan the QR code below to sign up to our newsletter.



Featuring Huddersfield & District Family History Society  
Explore the graveyard map and find your ancestors  
Get involved - share your history or take part!

**Shepley Over The Years Exhibition**  
Stories of Shepley and the war, buildings, trades and local people  
Set across St Paul's church, graveyard and hall, Marsh Lane HD8 8AE  
[stpaulshallshepley@gmail.com](mailto:stpaulshallshepley@gmail.com) 12-13th September 2026

# Shepley's snippets



Spring Blooms - Angela



Butterfly in my garden - Allan



Shimmering plumage in the sun - Allan



Spring Blooms - Angela



Walking up towards the Sovereign - Tracy



View from the top of Rowgate - Angela

sponsored by  
**Shepley Spring**



Thank you all for your lovely pictures. Harriet and Lewis, your penguins are really sweet. Alice's message is very important about plastic in our seas.

Thank you Florence for your pattern.

**KEEP THOSE PICTURES COMING TO :**



**SHEPLEYS MAG CHILDREN'S PAGE**

contributions.shepleysmag@hotmail.com or place your drawings in The Mag Box in Shepley Library



By the time this magazine reaches you, we will hopefully be a couple of weeks into the new season — weather permitting — and heading into the busy May and June period. These are the months when we host cricket at Shepley most days, whether matches or training, during the week and at weekends.

**Club Development**

With the village population continuing to grow, it's important that the Club can accommodate this from both a sporting and social perspective. We take pride in offering the children of Shepley the chance to play sport with their friends in a safe and supportive environment. We hope that by next month's edition we'll be able to share exciting news of our development plans for 2026 and beyond. These plans will help us support a growing community — and yes, they might involve a bit of fundraising along the way!

**On the Field**

Even before the season began, we had a slight setback with our overseas player, Jaimin Chauhan, breaking a bone in his foot just days before his scheduled arrival. While his arrival is delayed — hopefully only by a couple of weeks — it gives other players the chance to step in and push for 1st XI cricket this season. Improving squad depth is a key focus for 2026 and into 2027, and we are hopeful that a few of our promising juniors will appear on the 1st XI team sheet in the coming months.



Competition for places in the 2nd XI is already clear, with more local Shepley kids pushing for opportunities this year and giving captain Jack Dyson a few selection headaches along the way. Callum Rose (pictured) is certainly one to watch, with the Yorkshire CC junior impressing at the end of last season and pushing hard for a regular place in 2026.

Our Sunday League team is also expected to take further strides this year. What has been a 'social' team for a number of seasons will now be based more around selection, blending the experience of former 1st and 2nd XI players — keen to pass on their wisdom — with the enthusiasm and promise of our junior players. Maybe we will see Isaac Pitcher and Sammy Goldthorpe, both currently representing West Yorkshire U12s, pushing for senior games this year. I hope so.

**Get Set for Cricket**

Every year we host our 'Get Set for Cricket' day at Shepley Cricket Club, asking volunteers from both the cricket and village communities to help us get everything ready for the season ahead. This includes putting the covers and sight screens back in place, re-varnishing woodwork, painting interior and exterior walls, jet washing, and general cleaning — all the things that ensure our members and guests have the best possible experience. This year we had over 30 volunteers across the day. Despite the cold weather, we soon warmed up to the task, and I hope you can see the fruits of that labour when you pass the ground. The work has continued in the days and weeks since, with a new storage shed and new benches



installed along the bottom of the ground. Lots of volunteers have given lots of time to make the Club look as good as it does, and I want to thank everyone for their support.

### Expanding Our Ladies Section

We're delighted to be expanding our ladies cricket offering for 2026 (yes, a repeat from March!) With a new hardball team and two softball teams planned, there is a level of cricket for everyone — from complete beginners to experienced players. Ladies cricket at Shepley is open to anyone from school Year 8 and above. We're always keen to welcome new faces into this vibrant and supportive part of the Club.

### All Star Cricket

Once again, we are running our All Stars programme — the ECB's introduction to cricket for 4–7 year olds. It has proved a great initiative for Shepley CC over the years, and once again the 50 places were snapped up within days of launch. We look forward to welcoming this year's enthusiastic young cricketers in May, along with many returning All Stars continuing their cricketing journey. For those of you interested in the development of the girls' game, 19 of the 50 registered All Stars this year are girls.

### Opening Times

Following a trial period towards the end of 2025, we will be adopting more formal opening times on senior match days, with the Club and bar staying open until 10pm on Saturdays through to the final match in mid-September. We are, of course, open to non-members and any visitors will be made welcome to join us for a drink or just to watch the cricket.

### Shepley Cricket Club – May fixtures at Marsh Lane

Saturday 2nd May	2XI vs Holmbridge CC	1:00pm
Sunday 3rd May	1XI vs Honley CC (Sykes Cup Round 1)	12:30pm
Saturday 9th May	1XI vs Skelmanthorpe CC	12:30pm
Sunday 10th May	1XI vs Hanging Heaton (Heavy Woollen)	1:00pm
Saturday 16th May	2XI vs Broad Oak CC	1:00pm
Saturday 23rd May	2XI vs Holmfirth CC	1:00pm
Saturday 30th May	1XI vs Moorlands CC	12:30pm

Matthew, Shepley Cricket Club

What does it mean to be  
**FULLY ALIVE**

At  
**Still Tuesday**  
starting from April 21st 2026  
Using Elizabeth Oldfield's book 'Fully Alive'  
we will be exploring  
'Tending to the soul in turbulent times'

Join us at:  
St Paul's Church, Marsh Lane, Shepley  
10.00—12.00 on Tuesdays

For more information contact  
Rev Sue Clarke [sueclarke538@gmail.com](mailto:sueclarke538@gmail.com)

**WHERE IS IT?**  
**Last month -**  
The Lamp Room  
on Shepley Station,  
platform 2.



**SHEP ~ BAT**



**The Mousetrap**  
Words

Answer elsewhere in the  
magazine

## Weekly Dates for your Diary

Day	Event	Location	Time
<i>Sundays</i>	Church Service	Methodist Church	10:45am
<i>Mondays</i>	REBEL Theatre Arts School (term-time only)	St Paul's Church Hall	5:00pm – 8:00pm
<i>Mondays</i>	Rhythm Time (term time only) - toddlers	Methodist Church	10:15am
<i>Mondays</i>	Rhythm Time (term time only) - babies	Methodist Church	11:00am
<i>Mondays</i>	Oasis Café	Methodist Church	1:30pm – 3:30pm
<i>Mondays</i>	Library Walking Group for leisurely walks	Meet at Shepley Library	1:30pm prompt
<i>Mondays</i>	Rhyme Time / Preschool Story	Shepley Library	2:30pm – 3:00pm
<i>Tuesdays</i>	Paula's Community Café	St Paul's Church Hall	11:00am – 2:00pm
<i>Tuesdays</i>	Post Office Van	Black Bull car park	1:15pm – 2:15pm
<i>Tuesdays</i>	REBEL Theatre Arts School (term-time only)	St Paul's Church Hall	4:30pm – 6:30pm
<i>Tuesdays</i>	Shepley Band Practice	Methodist Church	7:30pm – 9:30pm
<i>Tuesdays</i>	Shepley Singers	St Paul's Church Hall	8:00pm – 9:00pm
<i>Wednesday</i>	Holy Communion	St Paul's Church	10:00am
<i>Wednesday</i>	Laurie Nettleton Pilates	St Paul's Church Hall	6:00pm – 7:00pm
<i>Thursdays</i>	Toddler Group (term time only)	Methodist Church	9:15am – 11:15am
<i>Thursdays</i>	Slimming World	Methodist Church	5:30pm and 7:00pm
<i>Thursdays</i>	Beavers & Cub Scouts (term-time only)	St Paul's Church	6:00pm – 8:00pm
<i>Fridays</i>	Oasis Café	Methodist Church	1:30pm – 3:30pm
<i>Fridays</i>	Lego & Duplo Club	Shepley Library	2:00pm – 5:00pm
<i>Fridays</i>	Tang Soo Do (Denby Dale)	St Paul's Church Hall	6:30pm – 8:00pm
<i>Saturday</i>	REBEL Theatre Arts School (term-time only)	St Paul's Church Hall	9:30am – 1:30pm
<i>Saturday</i>	Lego & Duplo Club	Shepley Library	10:00am – 12:00pm



*Shepley Library*  
*May 21st*  
*2pm*  
*Needle punched*  
*Felt*  
*Equipment provided*  
*Suggested donation £5 for*  
*refreshment and materials*



<p><b>Health</b></p> <p>Doctors' Surgery 602001            Shepley Pharmacy 605608            Out of hours - NHS Online 111            Emergencies only 999            Dentist - Shepley 606050            Dentist - Lepton 605303            Huddersfield Royal Infirmary Hos. 342000            Calderdale Royal Infirmary Hospital                - out patients 01422 357171            Barnsley Hospital 01226 730000            Holme Valley Hospital 0303 3309689            Only Orthodontics 454600            CLEAR - Mental Health Support 519097</p>	<p><b>Education</b></p> <p>Shepley First School 603230            Shepley Preschool 606022            Birdsedge First School 605441            Shelley First School 222750            Scissett Middle School 865444            Kirkburton Middle School 222737            Shelley College 868777            Holmfirth High School 691460            Cliffe House, Shepley 416416</p>
<p><b>Churches</b></p> <p><b>St. Paul's Church</b>            Rev Lindsey Barber 07920 687157            Contact for Contemplative Church:            Rev Sue Clarke 07896 464417            Letting Steward:            Katie Bannister 07895430374 or  <a href="mailto:stpaulshallshepley@gmail.com">stpaulshallshepley@gmail.com</a>  <b>Shepley Methodist Church</b>            Rev. Sue Pegg 934405 or  <a href="mailto:revsuepegg@outlook.com">revsuepegg@outlook.com</a>            Letting Steward: Liz Hirst 602451</p>	<p><b>Your Local Politicians</b></p> <p><b>Member of Parliament</b>            Jade Botterill            Email: <a href="mailto:jade.botterill.mp@parliament.uk">jade.botterill.mp@parliament.uk</a></p> <p><b>Kirklees Councillors</b>            Bill Armer 01484 314314                email: <a href="mailto:bill.armer@kirklees.gov.uk">bill.armer@kirklees.gov.uk</a>            John Taylor 07831 810096                email: <a href="mailto:johnj.taylor@kirklees.gov.uk">johnj.taylor@kirklees.gov.uk</a>            Richard Smith 07799 310725                email: <a href="mailto:richard.smith@kirklees.gov.uk">richard.smith@kirklees.gov.uk</a></p> <p><b>Parish Councillors</b>            John Taylor 07831 810096                email: <a href="mailto:johnjtaylor29@yahoo.co.uk">johnjtaylor29@yahoo.co.uk</a>            John Cowan 07710 563889                email: <a href="mailto:john.cowan1946@gmail.com">john.cowan1946@gmail.com</a>            Charlotte Bright 07926 115654</p>
<p><b>Police</b></p> <p>Emergency Only. 999            For Police attendance. 101            Kirkburton Police Station 436898            Huddersfield Police Station 436876            British Transport Police 0800 405040</p>	<p><b>Local Services</b></p> <p>Shepley Library 414868            Shepley Co-op 604163            Sovereign Co-op 603524            Holmfirth Pool 766365            Scissett Baths 766878            Kirklees Light Railway 865727            Tourist Information Holmfirth 414868            LBT Theatre Huddersfield 430528            Penistone Paramount 01226 767532            Donaldson's - Vets 508708</p> <p><b>Royal Mail</b>            Sorting Office Scissett 864725            Customer Services 0345 740740</p>
<p><b>Transport</b></p> <p>West Yorkshire Metro 0113 245 7676            National Rail Enquiries 08457 484950            Arriva Bus 0344 800 4411            First West &amp; N Yorkshire 0113 381 5000            Yorkshire Tiger 0344 8004411                Waterloo depot 537277                Honley Depot 660808                Complaints 01422 371099            Penistone Line Partnership -                Sarah Wells 07450 807953            Leeds Bradford Airport 0871 288 2288                (premium number - charges apply)            Manchester Airport 0808 169 7030</p> <p><b>All numbers 01484 unless stated otherwise</b></p>	

**Please Note:**

Every effort is made to ensure the accuracy of information contained in this magazine, but we are unable to accept responsibility for any omissions or errors that may occur. Any article or advertisement included in the magazine does not constitute any form of accreditation or approval.

ICF Professional Certified Coach

Established 2008

# Adult ADHD Coaching

In-person in Shepley & online  
(formal diagnosis not required)

www.trudinetherwood.com  
trudi@trudinetherwood.com



TIMELESS CABINERY

07368445982

@TIMELESSCABINERY07

WWW.TIMELESSCABINERY.CO.UK

**SHARP Tree Services**  
Professional Tree Surgeons  
in Huddersfield and  
the Holme Valley



Tree Services, Fencing, & Landscaping  
Mobile: Peter **07976 523994**  
Mobile: Simon **07967 712448**  
Logs and Woodchip for Sale

## ROBERT DENTON

(Shepley)

**PLASTERER**

All types of plastering work  
carried out

Rendering, Pointing & Coving

**Prompt Clean Service**  
30 years experience

Telephone:

**07816 972925**  
**01484 608245**

## DONALDSON'S VETS



Caring for all animals  
great and small...

Independent Veterinary Group  
24 hour state of the art hospital  
facilities available all year round  
Over 35 vets  
with a wealth of experience



**01484 508708**

www.donaldsonsvets.co.uk

## Gutter Geezer

**RESIDENTIAL  
& COMMERCIAL**  
PROFESSIONAL RAINWATER  
GUTTER CLEANING & REPAIR  
SERVICE

ASK FOR JON



**07753 201959**



GutterGeezer@yahoo.com



Follow us on  
facebook

Venetian-Roller-Vertical-Roman-Perfect Fit-Shutters-Blind Screen



## Kestrel Blinds & Shutters

For a great choice of blinds and shutters at  
affordable prices

We provide a personal 'in house' service - (we come to you)  
which includes free measuring and fitting.  
Call your local family business with 16 years worth of satisfied  
customers

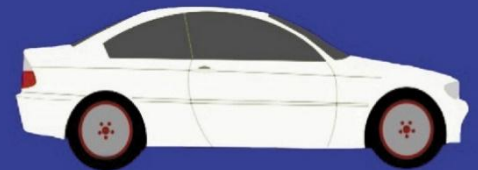
Dan - 07359 206263

Email: [dan@kestrelblinds.co.uk](mailto:dan@kestrelblinds.co.uk)

Website: [www.kestrelblinds.co.uk](http://www.kestrelblinds.co.uk)

Venetian-Roller-Vertical-Roman-Perfect Fit-Shutters-Blind Screen

## SOVEREIGN GARAGE LTD



Repairs . Servicing . MOTS

Tel: (01484) 606666

Holmfirth Road, Shepley, Huddersfield.



## PARKSIDE GARAGE

HUDDERSFIELD'S PREMIER  
INDEPENDENT JAGUAR LAND ROVER  
SPECIALIST

01484 767126

WWW.THEPARKSIDEGARAGE.CO.UK



SAVE UPTO 50% ON MAIN DEALER LABOUR AND PARTS

SERVICE CENTRE • REPAIRS • MOT'S  
DIAGNOSTICS • ALL MAKE PRESTIGE CARS

Parkside Garage Ltd | 63, Somerset Road | Huddersfield | HD5 8JA



\*subject to vehicle availability

# BRIGGS & OLIVER

antiques bought & sold  
valuations & probate  
full & part house clearances  
[www.briggsandoliver.com](http://www.briggsandoliver.com)  
07789 935125

# Russell

Quality Plumbing  
&  
Heating Services



Contact: Russell Pryke

**Mobile: 07721 745519**

[www.russell-plumbing.co.uk](http://www.russell-plumbing.co.uk)  
3 Cleveland Way, Shelley, Huddersfield

# WHITE ROSE BLINDS

AFFORDABLE  
QUALITY BLINDS,  
SHUTTERS AND  
CURTAINS FROM  
YOUR LOCAL  
COMPANY



FOR A FREE QUOTE  
CALL MICHAEL

01484 863188

07711 699 138

[www.whiteroseblinds.com](http://www.whiteroseblinds.com)

Email: [michael@whiteroseblinds.com](mailto:michael@whiteroseblinds.com)

# Dodson

CONSTRUCTION LTD

NEW BUILDS  
EXTENSIONS  
BARN CONVERSIONS  
ROOFING  
GROUNDWORKS  
PATIOS / FENCING  
& MORE...

Contact us today for a  
**FREE QUOTATION**

TELEPHONE:

**07500 015037**

[dodsonconstruction.ltd@gmail.com](mailto:dodsonconstruction.ltd@gmail.com)

## K&K CARPET CARE

15 Stocks Way  
SHEPLEY

Tel: 01484 606564

Mobile 07808 395952

*Your Local Carpets & Upholstery  
Cleaning Expert And Carpet Fitter*

**GUARDSMAN STAIN PROTECTION**  
**FREE QUOTATIONS**  
**WITHOUT OBLIGATION**

**MARTIN SCOTT**  
(SHEPLEY)

## ELECTRICIAN

ALL TYPES OF ELECTRICAL  
WORK UNDERTAKEN

PART P REGISTERED INSTALLER

TEL: 01484 606067

MOB: 07971 727153

## B. Lockwood & Son

Painters & Decorators

Est. 1982



FOR A FREE ESTIMATE RING

**Mobile: 07742 735516**

## J K Senior

**Building Contractor**

Over 25 years' experience

All work carried out:-  
Home Extensions & Conversions,  
Patios, Ground Works,  
Block Paving, Pointing, etc.  
For a free estimate contact Jonathan

**Mob: 07841 450448**

[jksenior56@sky.com](mailto:jksenior56@sky.com)

## Plan 2 Plumb

Peace of mind  
plumbing and heating  
for your home

Call for more information  
Tel 07754 474837

## Andrew Crookes

Plumbing, Heating, Gas & Tiling

Always a First Class Job  
at a Reasonable Price

Large or Small Jobs  
Receive Prompt Attention



Your Local Gas  
Service Engineer  
Telephone



01484 602010 or 0790 182 6085

## T W BIRKS & SON FUNERAL DIRECTORS

Taking the greatest care  
in and around Shepley

**Funerals from £1,495**

Holme Valley Funeral Home,  
Woodhead Road, Holmfirth,  
Huddersfield HD9 2PR  
01484 683 322



[dignityfunerals.co.uk/local](http://dignityfunerals.co.uk/local)

## RICHARD HIRD

*Building & Roofing Contractor*

All aspects of building work undertaken

Maintenance	Extensions
Refurbishment	Re-roofs
Alterations	Velux Windows
Repairs	Patios/Pavings
Conversions	Gutters/Fall Pipes

19 Dearnfield, Upper Cumberworth, HD8 8NX  
**Tel: 07919 182450 or 01484 602558**